



The Sound OF CHANGE

SarasotaOrchestra.org

Giancarlo Guerrero,
Music Director

**SUBSCRIBE
TODAY!**

25 26 SEASON

MASTERWORKS

Concerts take place at Van Wezel Performing Arts Hall and Neel Performing Arts Center.

Featured Conductors



Giancarlo Guerrero
Music Director



Peter Oundjian
Guest Conductor



Katharina Wincor
Guest Conductor

MW1 - SYMPHONIC DANCES

November 7, 8, 9 | Van Wezel

Giancarlo Guerrero, conductor | Alessio Bax, piano

Jennifer HIGDON	<i>blue cathedral</i>
TCHAIKOVSKY	Piano Concerto No. 1
RACHMANINOFF	<i>Symphonic Dances</i>

MW2 - CLOSE ENCOUNTERS

December 6, 7 | Van Wezel

Giancarlo Guerrero, conductor | Pablo Sáinz-Villegas, guitar

DUKAS	<i>The Sorcerer's Apprentice</i>
RODRIGO	<i>Concierto de Aranjuez</i>
John WILLIAMS	<i>Suite from Close Encounters of the Third Kind</i>
RESPIGHI	<i>Pines of Rome</i>

MW3 - PICTURES AT AN EXHIBITION

January 16 | Neel PAC January 17, 18 | Van Wezel

Peter Oundjian, conductor | Himari, violin

Michael ABELS	<i>Amplify</i>
BRUCH	Violin Concerto No. 1
MUSSORGSKY/ arr. RAVEL	<i>Pictures at an Exhibition</i>

MW4 - VARIATIONS ON AMERICA

February 12 | Neel PAC February 13, 14, 15 | Van Wezel

Giancarlo Guerrero, conductor | Clayton Stephenson, piano

Adolphus HAILSTORK	<i>An American Port of Call</i>
GERSHWIN	Concerto in F
IVES/arr. SCHUMAN	Variations on "America"
DAWSON	<i>Negro Folk Symphony</i>



Alessio Bax, piano



Pablo Sáinz-Villegas, guitar



Himari, violin



Clayton Stephenson, piano



Benjamin Beilman, violin



Zlatomir Fung, cello



Chee-Yun, violin

MW5 - RITE OF SPRING

February 27, 28, March 1 | Van Wezel

Giancarlo Guerrero, conductor | Benjamin Beilman, violin

Joan TOWER	1920/2019
MOZART	Violin Concerto No. 5 (<i>Turkish</i>)
STRAVINSKY	<i>The Rite of Spring</i>

MW6 - BEETHOVEN'S FIFTH

March 19 | Neel PAC March 20, 21, 22 | Van Wezel

Katharina Wincor, conductor | Zlatomir Fung, cello

BRAHMS	<i>Academic Festival Overture</i>
DVOŘÁK	Cello Concerto
BEETHOVEN	Symphony No. 5

MW7 - BERNSTEIN AND MAHLER

April 17, 18, 19 | Van Wezel

Giancarlo Guerrero, conductor | Chee-Yun, violin

BERNSTEIN	<i>Serenade (after Plato's Symposium)</i>
MAHLER	Symphony No. 5

DISCOVERIES

Concerts take place at Sarasota Opera House. 75-minute performances without intermission.

DSC1

HIDDEN TREASURES

Saturday, October 4

Giancarlo Guerrero, conductor
Oliver Herbert, cello

BEETHOVEN

Overture to *Fidelio*

TCHAIKOVSKY

Variations on a Rococo Theme
(original version)

MAHLER

Blumine

MOZART

Symphony No. 31 (*Paris*)

DSC2

COPLAND: AN AMERICAN JOURNEY

Sunday, January 4

David Alan Miller, conductor
William Socolof, baritone

COPLAND

Appalachian Spring Suite

Selections from:

Rodeo Suite
Old American Songs
Music for the Theatre Suite
The Red Pony Film Suite
Orchestral Variations

DSC3

UNFINISHED BUSINESS

Saturday, May 16

Giancarlo Guerrero, conductor

SCHUBERT

Symphony No. 8 (*Unfinished*)

PERRY

Short Piece for Orchestra

HAYDN

Symphony No. 45 (*Farewell*)



Betsy Hudson Traba,
Principal flute



Daniel Jordan,
Concertmaster



Stephanie Block,
Principal viola



Bharat Chandra,
Principal clarinet

CHAMBER SOIRÉES

Concerts take place at Holley Hall.

CS1: SERENADES AND SYMPHONY

Sunday, September 28, 4:00 pm

R. STRAUSS	Serenade for Winds
DVOŘÁK	Serenade for Strings
MOZART	Symphony No. 25 in G Minor

CS2: MENDELSSOHN AND MASLANKA

Thursday, October 30, 5:30 pm

Eric EWAZEN	<i>Frost Fire</i>
MASLANKA	Wind Quintet No. 4
MENDELSSOHN	String Quartet No. 6

CS3: STRAUSS AND HIGDON*

Sunday, November 16, 4:00 pm

Jennifer HIGDON	<i>Book of Brass</i>
R. STRAUSS	Piano Quartet

CS4: MINIATURE MASTERWORKS*

Giancarlo Guerrero, conductor

Thursday, February 19, 5:30 pm

STRAVINSKY	<i>Dances concertantes</i>
WAGNER	<i>Siegfried Idyll</i>
SCHOENBERG	Chamber Symphony No. 1

CS5: MOZART IN MARCH*

Sunday, March 15, 4:00 pm

DOHNÁNYI	Serenade for string trio
JONGEN	<i>Deux pièces en trio</i> for flute, cello, and harp
MOZART	Quintet for Piano and Winds

CS6: SOUNDS OF THE AMERICAS*

Sunday, April 26, 4:00 pm

GINASTERA	String Quartet No. 1
CRESPO	<i>Suite Americana No. 1</i>
Paquito D'RIVERA	<i>Aires tropicales</i>

* These concerts are included in the four-pack subscription.

Pricing, artists, and repertoire in all series subject to change.

POPS SERIES

Concerts take place at Van Wezel Performing Arts Hall.



Evan Roider



Byron Stripling



Christopher Confessore

POPS1 - ON BROADWAY: DEFYING GRAVITY

January 30-31

Evan Roider, conductor
Debbie Gravitte, Liz Callaway,
and Scott Coulter, vocals

This program celebrates history's greatest musicals, including *The Lion King*, *Hamilton*, *Jersey Boys*, *The Phantom of the Opera*, and *Wicked*. A trio of vocalists offer breathtaking performances with Evan Roider, conductor of more than 1,000 performances of *Wicked*.

POPS2 - WHEN THE SAINTS GO MARCHING IN

March 13-14

Byron Stripling, conductor
Crystal Monee Hall, vocals

Byron Stripling first stepped into the spotlight as lead trumpeter and soloist with the Count Basie Orchestra. In this homage to the blues, Byron leads you on a journey through the classic hits made famous by Jazz Age icons and New Orleans favorites such as Muddy Waters, Ma Rainey, and Louis Armstrong.

POPS3 - BOND AND BEYOND

April 24-25

Christopher Confessore, conductor
Morgan James, vocals

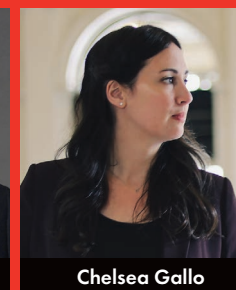
James Bond preferred "shaken," but this tribute to 007's musical legacy is guaranteed to leave you "stirred!" This thrilling concert features iconic themes and lush vocals from across the Bond universe, from *Goldfinger* to *Goldeneye*. Relive the suspense, passion, and glamor with soaring melodies and powerful brass.

GREAT ESCAPES

Concerts take place at Holley Hall.



Stuart Chafetz



Chelsea Gallo



Evan Roider



Matthew Troy



Rei Hotoda



Christopher Confessore

GE1 BUGS, BATS, AND BIRDS

October 15-18

Stuart Chafetz, conductor

GE3 UNDER THE BIG TOP

January 7-11

Evan Roider, conductor

GE5 DANCE THE NIGHT AWAY

March 4-8

Rei Hotoda, conductor

GE2 OH, WHAT FUN!

December 10-14

Chelsea Gallo, conductor

GE4 LOVE NOTES

February 4-8

Matthew Troy, conductor

GE6 STARRY NIGHT

May 6-9

Christopher Confessore, conductor

2025-2026 SUBSCRIPTION PACKAGES

MASTERWORKS SERIES

Neel 3 3 concerts at 7:30 pm Neel Performing Arts Center MW3 - Fri, Jan 16 MW4 - Thurs, Feb 12 MW6 - Thurs, March 19 Neel 3 subscription does not include MW1, MW2, MW5 and MW7.	Friday 5 5 concerts at 7:30 pm Van Wezel MW1 - November 7 MW4 - February 13 MW5 - February 27 MW6 - March 20 MW7 - April 17 Friday 5 subscription does not include MW2 and MW3.	Saturday 7 7 concerts at 7:30 pm Van Wezel MW1 - November 8 MW2 - December 6 MW3 - January 17 MW4 - February 14 MW5 - February 28 MW6 - March 21 MW7 - April 18	Sunday 7 7 concerts at 2:30 pm Van Wezel MW1 - November 9 MW2 - December 7 MW3 - January 18 MW4 - February 15 MW5 - March 1 MW6 - March 22 MW7 - April 19
---	--	---	---

DISCOVERIES

Sarasota Opera House
Saturdays at 7:30 pm
and Sundays at 4:00 pm

3 Concerts

Saturday, October 4
Sunday, January 4
Saturday, May 16

CHAMBER SOIRÉES

Holley Hall
Sundays at 4:00 pm and Thursdays at 5:30 pm

All 6 Concerts Sun, September 28 Thur, October 30 Sun, November 16 Thur, February 19 Sun, March 15 Sun, April 26	Concert 4 Pack CS3 - Sun, November 16 CS4 - Thur, February 19 CS5 - Sun, March 15 CS6 - Sun, April 26
---	--

POPS SERIES

Van Wezel

Friday Nights 3 concerts at 7:30 pm January 30 March 13 April 24	Saturday Matinees 3 concerts at 2:30 pm January 31 March 14 April 25	Saturday Nights 3 concerts at 7:30 pm January 31 March 14 April 25
---	---	---

GREAT ESCAPES SERIES

Holley Hall

Wednesday 6 concerts at 5:30 pm October 15 December 10 January 7 February 4 March 4 May 6	Thursday 6 concerts at 7:30 pm October 16 December 11 January 8 February 5 March 5 May 7	Friday 6 concerts at 5:30 pm October 17 December 12 January 9 February 6 March 6 May 8	Saturday 6 concerts at 7:30 pm October 18 December 13 January 10 February 7 March 7 May 9	Sunday 4 concerts at 4:00 pm GE2 - December 14 GE3 - January 11 GE4 - February 8 GE5 - March 8
---	--	--	---	--

SARASOTA ORCHESTRA BOX OFFICE:

(941) 953-3434, then press '2' HOURS: Monday through Friday 10:00 am – 4:00 pm

New subscriptions may be purchased online at SarasotaOrchestra.org, or with order form and payment.

Subscription renewals can be found at SarasotaOrchestra.org/renew

SEATING PLANS

Subscribers save 20%. Below, we've crossed out the price you would pay if you purchased single concert tickets to these series. Next to it is your subscriber package price. Discounts are reflected in "Your Price."



MASTERWORKS

Van Wezel Performing Arts Hall
777 N. Tamiami Trail
Sarasota, FL 34236

AA Rows 3-18 Center
A Rows 3-18 Sides
BB Rows 19-25 Center
B Rows 19-25 Sides
Cf Rows 1-2
Cb Rows 26-29

	FRIDAY 5	SATURDAY 7	SUNDAY 7
AA	\$545 \$435	\$763 \$610	\$763 \$610
A	\$460 \$370	\$644 \$515	\$644 \$515
BB	\$375 \$300	\$525 \$420	\$525 \$420
B	\$300 \$240	\$420 \$335	\$420 \$335
both C	\$195 \$155	\$273 \$219	\$273 \$219

Neel Performing Arts Center
State College of Florida
5840 26th Street West
Bradenton, FL 34207

NEEL 3

AA \$255 \$205 Rows D-O
A \$192 \$153 Rows P-S
B \$159 \$127 Rows A-C

Sarasota Opera House
61 N. Pineapple Ave,
Sarasota, FL 34236

3 CONCERTS

AA \$240 \$190 Boxes
A \$195 \$155
BB \$135 \$110
B \$195 \$155 Mezz
C \$75 \$60 Balc

CHAMBER SOIRÉES

Holley Hall
Beatrice Friedman Symphony Center
709 N. Tamiami Trail, Sarasota, FL 34236

B Reserved Balcony
C General Admission on Main Floor

ALL 6 CONCERTS
B ~~\$384~~ \$250
C ~~\$288~~ \$189

4 CONCERTS
B ~~\$256~~ \$181
C ~~\$192~~ \$137

Holley Hall
Beatrice Friedman Symphony Center
709 N. Tamiami Trail
Sarasota, FL 34236

A Reserved Cabaret Tables (GE Sat)
B Reserved Balcony
C General Admission on Main Floor

6 CONCERTS
WED. | THURS. | FRI. SAT. SUN.

A - \$750 \$599 -
B \$384 \$307 \$414 \$330 \$256 \$210
C \$288 \$230 \$330 \$265 \$192 \$159

GREAT ESCAPES

Holley Hall
Beatrice Friedman Symphony Center
709 N. Tamiami Trail
Sarasota, FL 34236

A Reserved Cabaret Tables (GE Sat)
B Reserved Balcony
C General Admission on Main Floor

6 CONCERTS
WED. | THURS. | FRI. SAT. SUN.

A - \$750 \$599 -
B \$384 \$307 \$414 \$330 \$256 \$210
C \$288 \$230 \$330 \$265 \$192 \$159

Van Wezel Performing Arts Hall
777 N. Tamiami Trail Sarasota, FL 34236

3 CONCERTS

AA \$297 \$239 Rows 3-18 Center
A \$243 \$195 Rows 3-18 Sides
BB \$189 \$152 Rows 19-25 Center
B \$165 \$132 Rows 19-25 Sides
Cf \$123 \$99 Rows 1-2
Cb \$123 \$99 Rows 26-29

RENEWAL FAQ

Can I renew my subscription online?

Yes, if you have a user name and password for our website. If you don't, call the Box Office to get set up. When you are ready to renew online, visit SarasotaOrchestra.org/renew. Remember to include any notes about seating requests.

When are my tickets mailed (or available for pick up)?

Subscription tickets are prepared and mailed late July.

If you have not received your tickets within one week of your first concert, call us and we will print duplicates for you.

Mark your calendar and plan to attend your concerts, even if you do not have your tickets. We can always reprint tickets, even at the concerts.

How do I request a seating change within my series, or a series change?

Write your request on the renewal invoice, following the prompts on the back of the form to explain your desired seating. Tell us if you have any special needs due to physical or health reasons. Be as specific as you need.

Credit card payments are preferred over checks with change requests because we can easily adjust for the correct price. Requests for changes are processed after all same-seat renewals are completed. If your request is not available, we will renew the same seating you have now, unless you indicate otherwise.

If you would like a completely new type of series, please use the enclosed New Order form and include separate payment.

When will I know about my request for a change?

Requests for changes are processed after all same-seat renewals are complete. After the deadline, and after all same-seat renewals are

complete, we will be able to see which seats are available. We will follow your written request and process your change. (In some cases, we will call you to clarify.)

What if I cannot attend all of the events in my series?

We are happy to help you with free exchanges on your subscription tickets. You may request exchanges on your renewal form or after you receive your tickets. Contact the Box Office for exchanging into any other event in our Orchestra season, based on availability.

Friends attend with me, but all subscriptions are in my name. Should we put them under each person's name?

Yes. We recommend that multiple-seat subscriptions are divided into individual records. Only identified subscribers reap subscriber benefits. Otherwise, transactions regarding subscriptions (important mailings, requests for seating changes, reprints, email reminders, etc.) can only be carried out by the existing subscriber on record.

Include a note with your renewal, providing full names, addresses and phone numbers for each subscriber, and indicate which seats should be allocated to whom. Remember to include all payments. The following season, each individual will get their own renewal.

I want a friend to take over my released subscription.

Can I do that?

It is not our policy to allow "willing" of subscriptions to friends. As the existing subscriber, you would release your subscription in writing on the renewal invoice. Your friend would send in a new order form with a request for the seats you held. If the seat(s) are not reassigned to an existing subscriber in need of a change, then we will satisfy the request.

TICKET POLICIES

PURCHASES AND PAYMENTS: A check or credit card information must accompany each order. We accept Mastercard, Visa, Discover and American Express. We also accept faxed credit card orders.

EXCHANGES: Not feeling well? Please help keep everyone healthy and safe by staying home. If you are unwell or plans change, please reach out to our box office to ask about exchanges at 941-953-3434 or email BoxOffice@SarasotaOrchestra.org. Exchanges should be made in person at the Box Office during regular business hours, or mail in your tickets with instructions for the new date. The week of a concert, we can do phone exchanges, based on availability. Exchanges should be made prior to the concert you wish to switch. We exchange on a ticket-for-ticket basis, regardless of the original ticket value.

TICKET DONATIONS: You can also donate your tickets for resale. We will issue a donation acknowledgement for the value of the tickets when we receive them.

REPLACEMENT TICKETS: Reprints are free. If you have misplaced your tickets, contact the Box Office, or come to your concert and request reprinted tickets. We will be happy to assist you.

SPECIAL FEE: All prices include \$1 per ticket for Sarasota Orchestra Operating Reserve Fund. For events at the Van Wezel, a \$8 fee per ticket for each concert is included for service charges and parking, which is paid to the city-owned and operated Van Wezel. This fee is incorporated into the listed subscription and ticket prices.

PARKING: Free parking available near performance venues. Valet parking is available at the Van Wezel and Sarasota Opera House for a fee.

Photography, video, and audio recording are prohibited during concerts. Please refrain from strong scents.

Artists and repertoire in all series subject to change.

Sarasota Orchestra is committed to making our performances and facilities accessible to everyone in our community.



All of the Orchestra's facilities are accessible to persons using wheelchairs.



Assistive listening devices are available for all Orchestra performances.



Tourist Development Tax
Paid for in part by Sarasota County